

KVM ADD-On

2009-09

KVM ADD-On

Value adding solutions for your KVM
and IT applications



Intelligent solutions

Guntermann & Drunck GmbH was founded in 1985 by the people that gave the company its name.

Over 20 years have since past, and we are now a leading manufacturer of analog and digital KVM switching systems.

As an owner-managed company we work closely with the marketplace and make our decisions with and in the interests of our customers. It is our philosophy to meet our customers while making decisions, to accompany them in the process and ensure that they achieve their goals.

We can do this because as a medium sized company we have short communication paths and all core competencies are in house – from development through to production. This way we can even make the impossible possible at times. If it is thanks to the modularity of the products or by implementing a customised solution. We orient ourselves towards the needs of the customer – and not the other way round.

Organisations, service providers and companies of all sizes managing numerous computers, servers and other network devices trust the comprehensive advice and service provided by Guntermann & Drunck GmbH.

Thanks to these different fields of specialisation, the demands placed on the products are many and are manifold. Our products have to provide a long-life service, be secure, uncomplicated, user-friendly, understandable and adaptable.

The DevCon-Center is part of the KVM ADD-On group. It serves as central appliance for monitoring the status of networkable G&D devices of different product groups.

The DevCon-Center is connected to the network via two interfaces. By the integrated WEB interface all configurative or informative tasks are executed.

A functioning system includes a DevCon-Center and the belonging devices to be monitored.

Highlights

- **Monitoring, reporting and requesting appliance**
- **Compatible with G&D network devices**
- **Autonomous output of message or query via WEB interface**
- **Supports SNMP + Syslog**
- **Redundant power supply**
- **2 network interfaces**
- **central distribution of firmware updates**

High operational safety and reliability are essential to G&D products. Enhancing these well-established attributes, our latest products come with two network ports to actively query the system's status and dispatch relevant information via SNMP or Syslog-message (optional DevCon-function).

Any critical operational status can be recognised in advance and the system administrator can act accordingly. System availability and safety are increased for mission-critical applications such as live broadcast, Air or Ground Traffic Control etc..

Supported products

This function is currently supported by the the following product families:

- DL-Vision KVM Extender
- DL-MUX4 KVM Switch
- CompactCenter KVM Matrixswitch

Further networkable products are projected.



Front view



Rear view

DevCon-Center

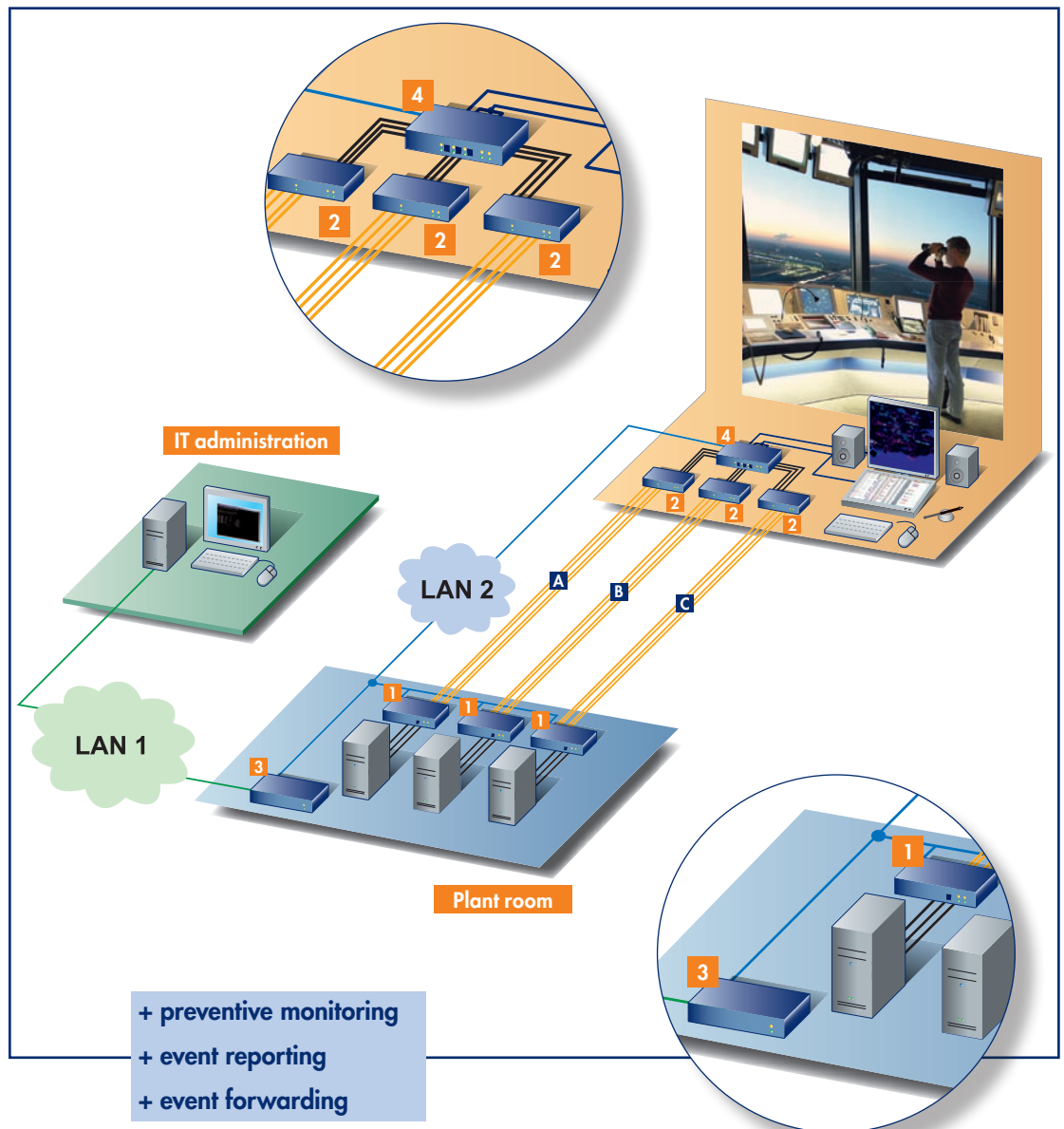
Article no.
A320 0008



System diagram:

- 1** Computer module
DL-Vision-
MC2-AR-CPU
- 2** User module
DL-Vision-
MC2-AR-CON
- 3** Device monitoring
DevCon-Center
- 4** Switch
DL-MUX4-MC2

- A** Primary system
- B** Redundant system
- C** Fallback system



Example

In air traffic control a highly available computer removal application by KVM Extender [3 lines (1 x operative, 1 x redundant, 1 x fall-back) with switchover] is supervised via a DevCon-Center.

Besides improving the working environment for both controller and computer, a preventive monitoring- and event-reporting system is installed. Consequently, the responsible IT department is enabled either to gather information about all connected networkable KVM devices at any time or to receive critical status messages automatically and upfront.

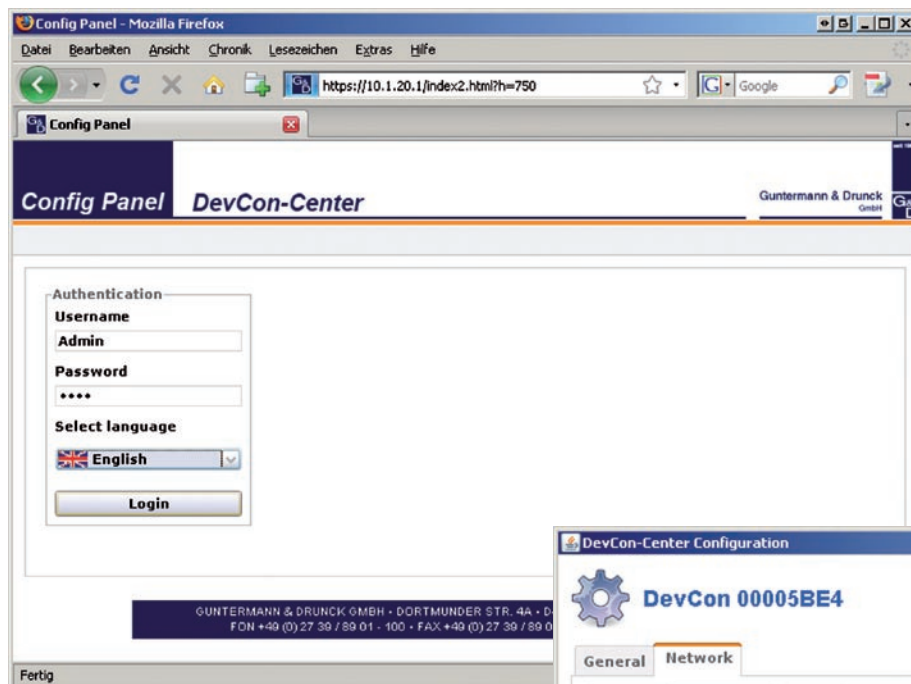
Depending on the event or any pre-defined threshold the DevCon dispatches a message to the IT administrator via network. Thus, active monitoring puts the administrator in a position to react even before an error arises.

Operation

The configuration of the DevCon-Center and all connected networkable KVM devices is carried out through an integrated WEB interface. The access is password-protected. The authentication can be carried out either locally at the system or against the respective directory services.

Web interface

The WEB interface is provided both in German and in English.



The DevCon-Center stays in direct contact with the connected devices and queries their status or receives messages and transmits them accordingly.

Thus active monitoring becomes possible.

Figure:
Login mask of DevCon-Center WEB interface

Within the configuration menu all connected networkable KVM devices can be given unique names for easy identification.

Configuring the network the user can define netfilter rules, activate the support of a central NTP server and adjust the authentication type.

Furthermore storage locations as well as log levels for syslog messages can be pre-defined within this menu.

SNMP functionality facilitates external querying of the SNMP agent by using an appropriate MIB file. The version SNMPv2c und V3 are supported. Additionally the forwarding of SNMP traps is integrated in the DevCon-Center.



Figure:
Network configuration of DevCon-Center

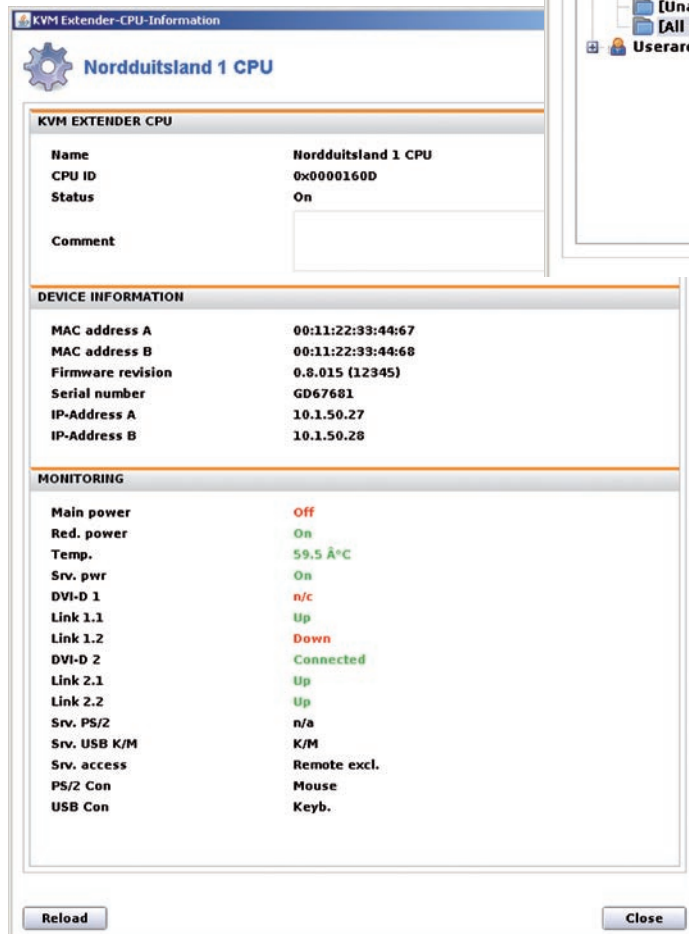
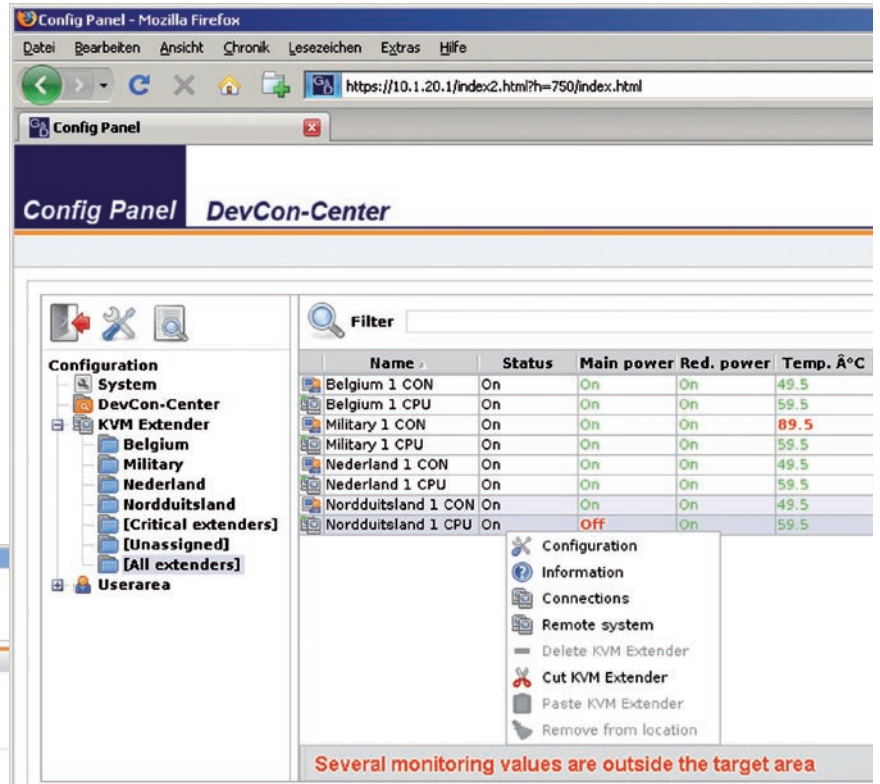
Additionally to configuring networkable KVM devices their system status can be displayed via WEB interface. Consequently the responsible administrator can monitor the complete system regardless of his location.

All available information and settings are displayed in a graphical interface (tree structure) providing the user with a better overview and enabling him to operate the interface intuitively.

All devices connected to the DevCon-Center are visualised in this tree structure.

New sectors can be created and devices can be grouped into these sectors. The default folder [Critical extenders] automatically extracts a copy of all devices with critical values allowing a fast and targeted access.

All values that differ from the target value are highlighted in red. Furthermore, the lower status bar of the WEB interface gives out a warning for each window as soon as a defined critical value is reached.



In addition to the overview (figure above), the values of all devices are also displayed in their device info card.

Among other things, the following status values are provided:

- main power supply - device
- redundant power supply – device
- power supply – computer
- DVI video input connection 1
- DVI video input connection 2
- uninterrupted transmission on all transmission cables
- access preemption for CPU or CON side

Figure left:
Device info card of a DL-Vision-MC2-CPU KVM extender monitored by a DevCon-Center

		DevCon-Center
Technical data		
Interfaces for local workplaces		0
Workplace connection		via network
Network		
	Speed	10/100/1000 Mbit/s
	Ports	2
Update procedure		via WEB interface
Power supply		internal power pack
Main + Redundant	Type	Connector for non-heating devices (IEC-320 C14)
	Connection	
	Voltage	AC100-240V/60-50Hz 220-110mA
	Power consumption (operation)	14,2-14,8W
Casing		
	Material	anodised aluminium
	Dimension w x h x d	
	Desktop	435 x 44 x 210 mm
	Rackmount	19" x 1HE x 210 mm
Weight		approx. 2,7 kg
Operation environment		
	Temperature	+5 bis +40 °C
	Air humidity	< 80%, non-condensing
Interfaces		
	Network A	RJ45 socket
	Network B	RJ45 socket
	USB 2.0	2 x USB-A socket
	Communication RS485	RJ45 socket
	Communication RS232	RJ11 socket
	Service	Mini-USB type B
Conformity		CE, RoHS

Minimum system

The DevCon-Center is a stand-alone device. Its deployment makes sense if it is used with other networkable G&D KVM devices equipped with the DevCon-function.

Components

DevCon-Center

Art. no.	Description	
A320 0008	DevCon-Center	Central monitoring and reporting appliance for networkable G&D devices; desktop, incl. 19" rackmount kit, 435 mm/1U

Connectivity

Two-metres-long power supply cables are generally included.

When ordering, please quote the article number and product description

G&D's RackConsole 17 is your solution for consolidating more computer power within limited rack space.

The compact 1U design contains an easy to install TFT-keyboard drawer with a high-quality display and a keyboard including touchpad technology.

In combination with a KVM-Switch or as a local user console of a Matrixswitch (e.g. CATCenter series) the Rack Console is the ideal solution for a space saving operation of all existing computers in the server cabinets.

Highlights

- resolution 1280 x 1024 @ 60Hz
- DVI and VGA supported
- rugged design
- requires only 1U
- extensive scope of supply

The RackConsole 17 comes equipped with a TFT-display offering a VGA as well as a DVI-D interface. The resolution is 1280 x 1024 (SXGA) at 16.7 mio. colours. The colour depth (DVI) is 24 bit.

Ball bearing runners render RackConsole 17 to be easily mounted inside a 19" rack. Instead of the usual eight height units for a conventional monitor, the Rack Console 17 requires only one height unit.



view closed



side view opened

RackConsole 17-DE (DVI+VGA)

Article no.
A320 0009

RackConsole 17-EN (DVI+VGA)

Article no.
A320 0010



		RackConsole 17 (DVI+VGA)
Technical data		
Display	Display size	17" (visible size 337 x 270 mm)
	LCD resolution	1280 x 1024 (SXGA)
	Frame-Rate	60 Hz
	Pixel pitch	0,264 mm
	Brightness	300 nits
	Viewing angle horizontal	+ 75 ° / - 75°
	Viewing angle vertical	+ 75° / - 60°
	Response time	3ms (rise), 10ms (fall)
	Contrast	500 : 1
	Supported video formats	DVI-D Single-Link, analog colour graphics
	Colours	16,7 mio. colours
	Colour depth	24 bit (DVI)
	Keyboard	Type
Languages		German, English
Power supply	Type	integrated power pack
	Connector	IEC plug (IEC-320 C14)
	Voltage	AC100-240V/60-50Hz
	Power consumption (operation)	30W
Casing	Material	aluminium
	Colour	silver
	Dimensions W x H x D	483 x 44 x 500 mm
	Rackmounted depth	19", 600 - 900 mm
Weight		approx. 9,5 kg
Operating environment	Temperature	0 to +50 °C
	Air humidity	< 80%, non-condensing
Interfaces	Keyboard/mouse	2 x PS/2 socket
	Video	1 x VGA socket, 1 x DVI-D socket
Konformität		CE, RoHS

Minimum system

The RackConsole 17 (DVI+VGA) is a stand-alone device. However it can be combined with several G&D devices to help optimize your service and decrease maintenance costs.

Components

RackConsole 17 (DVI+VGA)

Art. no.	Description	
A320 0009	RackConsole 17-DE (DVI+VGA)	TFT keyboard drawer for 19" mounting with 17" display, German keyboard layout; incl. set of telescopic rails and power cable carrier
A320 0010	RackConsole 17-EN (DVI+VGA)	TFT keyboard drawer for 19" mounting with 17" display, English keyboard layout; incl. set of telescopic rails and power cable carrier

Connectivity

Cables for connecting video- (DVI+VGA), keyboard/mouse and power are supplied.

When ordering please quote the article number and the product description.

I-Keys are programmable input devices with 16 (I-Key16) or 20 (I-Key20) keys.

Similar to a keyboard the pre-defined commands are routed to a connected KVM switch or computer.

Each of the keys can cover two functions (layer technology). Thus up to 30 or 38 individual macros can be stored in the I-Keys (respectively one key is missing for switching between the layers).

Highlights

- *1-key rapid access to shortcuts*
- *most simple creation of macros*
- *no programming knowledge needed*
- *stored commands can be understood by any computer*
- *doubling the number of keys by layer technique (less one key for changing layers)*
- *keys can be labelled individually*

Instead of the keyboard the device is connected to the keyboard interface of the computer. The keyboard itself is plugged into the PS/2 socket of the Y-cable of the I-Key. The devices are power supplied by the computer's keyboard interface.

The device is set into configuration mode by a switch located on the outer casing. Press the key you wish to programme. Then type in the macro. To save the macro press the programmed key again. Further to that at the I-Key20 two keys can be combined into one key only.



I-Key16

I-Key20

I-Key16

Article no.
A320 0002

I-Key20

Article no.
A320 0003

			I-Key16 / 20
Technical data			
Keyboard	Number of keys	I-Key16	16
		I-Key20	20
Power supply	Type	by keyboard interface of computer	
Connection cable	Length	1,9 m	
Casing	Material	plastics	
	Colour	black	
	Dimensions W x H x D	I-Key16	362 x 23 x 18 mm
		I-Key20	175 x 108 x 38 mm
Weight		I-Key16	approx. 0,2 kg
		I-Key20	approx. 0,3 kg
Operation environment	Temperature	0 to +50 °C	
	Air humidity	< 80%, non-condensing	
Interfaces	Keyboard	for keyboard	1 x PS/2 socket
		towards computer	1 x PS/2 plug
Conformity	CE, RoHS		

Minimum system

I-Keys are stand-alone devices. They can be used either with G&D devices or directly connected to a computer.

Components

I-Keys

Art. no.	Description	
A320 0002	I-Key16	Programmable input device, 16 Keys, PS/2 design
A320 0003	I-Key20	Programmable input device, 20 Keys, PS/2 design

Connectivity

I-Keys are delivered ready for connection.

When ordering, please quote the article number and product description

A wealth of variants thanks to the modular design

A lot of G&D products are available with different equipment options. The icons below the product pictures show the equipment of the corresponding product.

Important note for KVM Extender

To ensure that the computer and workstation modules are compatible, please check that functional features (letters "ARU" as well as "M" or "S") are identical on both modules. An exception to this is the "delay" component (letter "D") at CATVision which is only used in the computer module.

Example CATVision:

CATVision-ARUD-CPU + CATVision-ARU-CON = ok

CATVision-ARUD-CPU + CATVision-U-CON = not ok

Example LwLVision:

LwLVision(S)-MC2-ARU-PC + LwLVision(S)-MC2-ARU-REM = ok

LwLVision(S)-MC2-ARU-PC + LwLVision(M)-MC2-AR-REM = not ok

ABBREVIATIONS

CPU = Computer module

PC = Computer module

CON = User module

REM = User module

MC2 = Multichannel 2

MC3 = Multichannel 3

MC4 = Multichannel 4

M = Multimode

S = Singlemode

RM = For assembly in a 19" rack

A = Audio

AR = Audio + RS232

R = RS232

U = transparent USB 1.1

U2 = transparent USB 2.0

D = Delay

EQUIPMENT



= digital single-link video



= Delay



= digital dual link video



= Power



= analog video



= Audio



= Desktop



= RS232



= Rackmount



= FireWire-800



= Network connection



= USB 1.1 or 2.0












= Web interface



Turning technology into solutions

Profit from our solutions expertise,
from planning through to support!

-  KVM Extender
-  KVM Sharing
-  KVM Switches
-  KVM Matrix switches
-  KVM IP Access
-  Power Switches
-  KVM Connectivity
-  KVM Add-On
-  Digital Signage

Guntermann & Drunck GmbH
Dortmunder Straße 4a
D-57234 Wilnsdorf, Germany

Telephone +49 (0) 2739 8901-333
Fax +49 (0) 2739 8901-120

sales@GDsys.de

www.GDsys.de

©All brandnames used are the registered trademarks of the relevant manufacturers.
We reserve the right to make technical modifications.
Illustrations are examples only.
Descriptions normally reflect the max. expansion depth.

Taric Code
WEEE-Reg.-Nr. DE30763240